



) david
trubridge

David Trubridge
PO Box 15 Whakatu
Hastings 4161, New Zealand

info@davidtrubridge.com
davidtrubridge.com
+64 6 650 0204

A photograph of a steep, forested mountain slope. The mountain is covered in dense, lush green vegetation, including various types of trees and ferns. The slope is very steep, and the vegetation appears to be growing in a tropical or subtropical environment. The sky is a clear, vibrant blue with some light, wispy clouds. The overall scene is one of natural beauty and tranquility.

Nature is life

Our creations bring nature's beauty
into our built spaces.



Delicate footprint

We believe that every day is a footprint in time for which we are accountable.

A large, intricate pile of driftwood dominates the right side of the frame. The wood is bleached white and grey, with some darker, charred sections. It is stacked in a way that creates a sense of height and volume. In the background, a grassy dune rises against a heavy, overcast sky. The foreground is a sandy beach littered with smaller pieces of driftwood and debris.

Sense of place

Stories from the edge that speak of
a wild land and Pacific peoples.



History

David Trubridge's early work came to prominence in 2001 when the Italian design house Cappellini bought the rights for his recliner Body Raft. The Coral light followed in 2003, establishing a blueprint for kitset products that minimised environmental footprint.



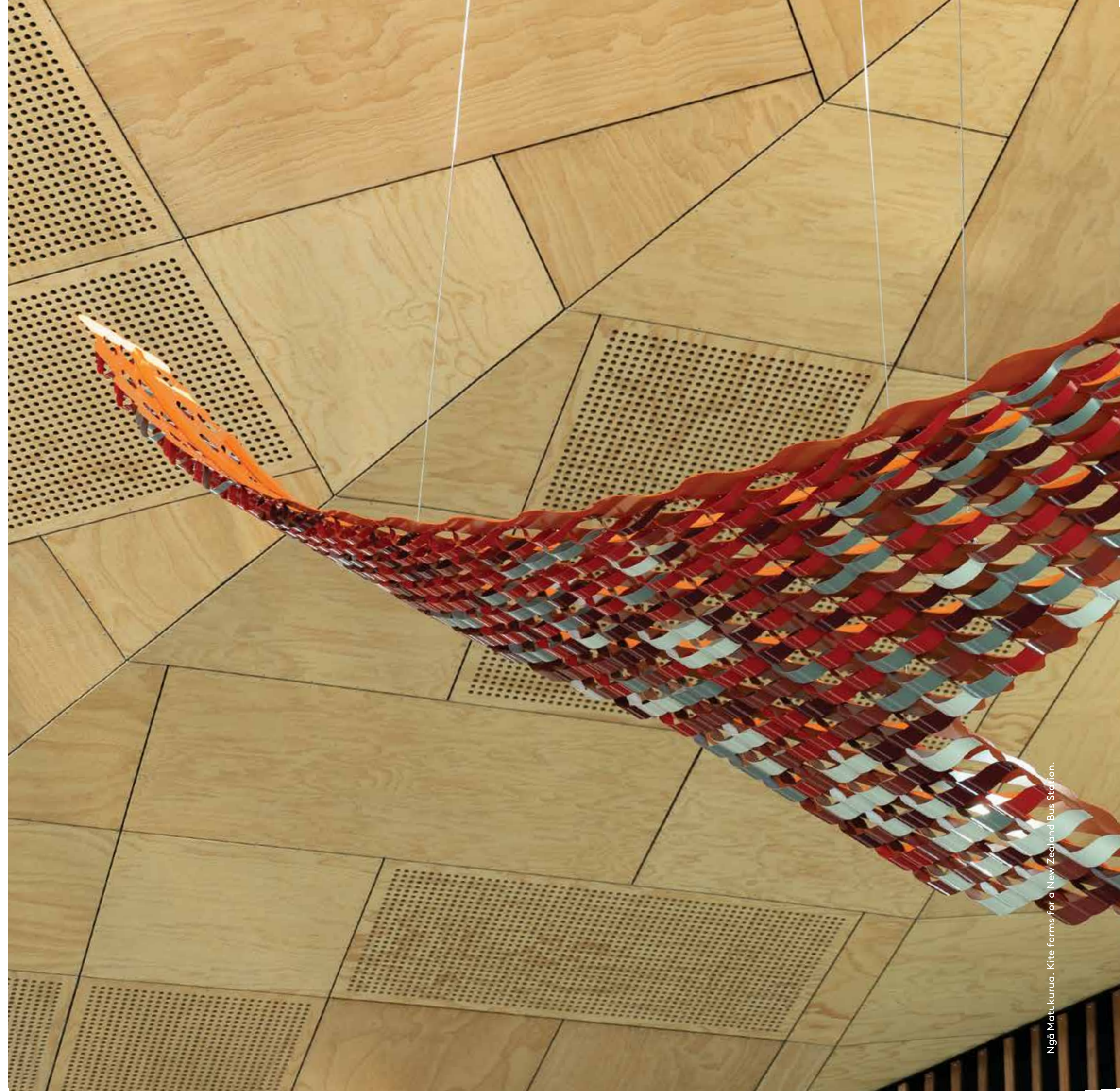
Workshop

Today, David Trubridge Ltd makes everything in our New Zealand factory — which includes a showroom and design studio. We have a team of skilled designers working on a range of projects: both bespoke for an international client base and for our own production.



Studio

The company also has a dedicated design facility; DT Studio, which works internationally on commission work, public art and licensed designs for other companies. These projects have taken place all over the world and for varied clients, both large corporations and small businesses.









Nanau, American ash
Photo — Simon Devitt

Furniture

The company has grown from a producer of fine furniture to predominantly lighting design and manufacture. However, we still make one-off pieces from our original collection of furniture and can design and manufacture custom pieces to order. Further possibilities exist by designing for other companies to manufacture in their home market.



Flow bench for Suncorp.



Waka, for Offecct

Commissions and projects

We can project manage for, or collaborate with, an existing team. We accommodate any scale from jewellery to giant sculptures. We have worked on a varied range of projects including fabric collections, wall coverings, sustainable outdoor screening, acoustic products and natural homewares.



Rotorua Treewalk Nightlights
Photo — Gotya Photography

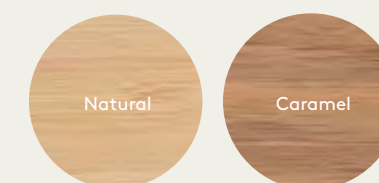


Our lights are sent kitset and we rely on our customers and our stockists to assemble them at location. We call this our Seed System. Helping us to do this dramatically reduces the design's volume during transit which also minimizes the environmental impact of shipping designs from New Zealand. Assembly is easy and fun!

Finish Options

We offer 13 stock finish options for most of our kitset range. We use low VOC acrylic paint and it is most commonly used on the interior of the light. We can also produce lights in other finishes or colours by special order. All lights are made from sustainably grown bamboo plywood sourced from an FSC accredited factory.

Raw finish:

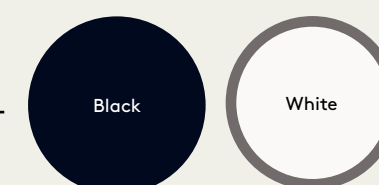


Painted 1 Side:



Painted 2 Sides:

(inside and outside)

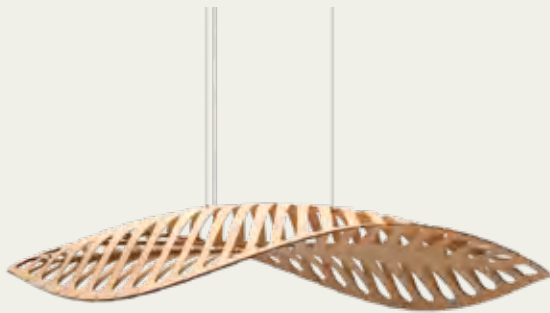


Designs

Our designs are closely linked to patterns found in nature. We make lights of all shapes and sizes to suit any residential or commercial space from a child's bedroom to a multistory hotel foyer. They create ambiance and give a warm, dappled light.



Snowflake



Navicula

Navicula is inspired by one of the many microscopic diatoms that float around in the oceans.

Length	Width
1500mm (60")	570mm (22")
2000mm (78")	900mm (35")
2500mm (98")	1000mm (39")

Colour Options



Navicula Small, Bamboo Plywood



Maru

The effect of shadow play on surrounding walls and ceiling is Maru’s hidden quality. The name Maru is found in both New Zealand Māori and Japanese languages, with references to the cycle of life.

Diameter

1100mm (43")
1400mm (55")

Colour Options



Maru Small, Bamboo Plywood (Black 2 Sides).



Coral

Based on one of the geometric polyhedra that have interested David since he was a boy.

Diameter	Diameter	Diameter
400mm (16")	400mm (16")	800mm (31")
600mm (24")	600mm (24")	1000mm (39")
800mm (31")	800mm (31")	1350mm (53")
1000mm (39")	1000mm (39")	
1200mm (47")	1200mm (47")	
1600mm (63")	1600mm (63")	

Floral

Designed as a softer, more decorative offering alongside Coral which is more structured.

Sola

Based on the same geometry as Coral and Floral with more connection points, creating an intensely intricate pattern.

Finish Options



Coral light, varied sizes and colours.

Baskets of Light



Leaf (New)

Leaf is a redesign of one of our Three Baskets of Knowledge range, now called Baskets of Light. There are three design variations all made from thin birch plywood.

Height	Diameter
1400mm (55")	600mm (24")

Wave (New)

Wave is a redesign of one of our Three Baskets of Knowledge range, now called Baskets of Light. There are three design variations all made from thin birch plywood.

Height	Diameter
1400mm (55")	600mm (24")

Crystal (New)

Crystal is a redesign of one of our Three Baskets of Knowledge range, now called Baskets of Light. There are three design variations all made from thin birch plywood.

Height	Diameter
1400mm (55")	600mm (24")

Finish Options



Baskets of Light (Leaf).



Pebbles

Pebbles has a hidden pattern only visible when the light is turned on. The revealed pattern is reminiscent of boulders or pebbles.



Hills

Hills has a hidden pattern only visible when the light is turned on. The revealed pattern is like undulating hills.



Dunes

Dunes has a hidden pattern only visible when the light is turned on. The revealed pattern is like the wind swept waves in sand dunes.

Diameter	Height	Diameter	Height	Diameter	Height
240mm (9")	255mm (10")	240mm (9")	255mm (10")	240mm (9")	255mm (10")

Finish Options





Belle

A lantern like pendant with waving patterns that form the shape of a flower bud.

Beau

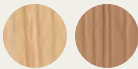
An open form spreading light downwards, making it ideal over work areas.

Ulu

Its shape mimics the leaf of a Breadfruit tree, its form that of a standard drum lightshade.

Diameter	Height	Diameter	Height	Diameter	Height
330mm (13")	380mm (15")	600mm (24")	280mm (11")	385mm (15")	400mm (16")
430mm (17")	500mm (20")	750mm (30")	360mm (14")	385mm (15")	650mm (26")

Colour Options

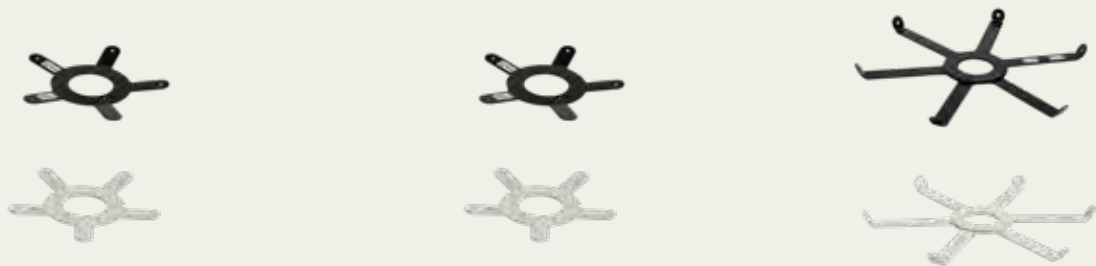


Belle 330mm (13"), Bamboo Plywood
Photo — Hollow Creative



Table Lamp Adapter (New)

Choose any finish of our our Kōura 500mm(20”), Coral 400mm(16”), or Floral 400mm(16”). Select your adapter colour and fit to a base (Base not included).



Adapter Colour Options



Kitset Light Finish Options



Kōura Table Lamp (Black 1 Side).



Nīkau

The form of this light is based on the bulb and intersecting leaf forms of a Nīkau palm tree. Red Dot winner.



Sunflower (New)

Sunflower is a wall lamp shade to cover/adorn an existing or new wall sconce. It can also be used as a wall sculpture or uplit/downlit.



Pola

Pola sits alongside our Sola pendant and both offer a distinct aesthetic based on the forces of nature.

Diameter	Height	Diameter	Depth	Diameter
405mm (16")	1615mm (64")	600mm (24")	130 mm (5")	800mm (31")
		900mm (36")	180 mm (7")	1000mm (39")

Finish Options



Pola 800mm (31") natural



Kōura

Inspired by woven baskets and also from the curled form of the New Zealand native fresh water shrimp, kōura, which is its Māori name.

Height	Diameter	Height	Diameter	Height	Diameter
500mm (20")	300mm (12")	500mm (20")	170mm (7")	560mm (22")	230mm (9")
750mm (29")	420mm (17")	900mm (35")	320mm (13")	750mm (30")	330mm (13")
1000mm (39")	550mm (22")	1400mm (55")	500mm (20")		
1600mm (63")	950mm (37")				
2000mm (79")	1100mm (43")				
2400mm (94")	1400mm (55")				



Hīnaki

Based on fish traps which are called hīnaki by Māori. Hīnaki traps were made from woven vines, some in beautiful forms.



Swish

Designed to hide the glare of a lamp, the alternating panels create a subtle lighting effect.

Finish Options



Hīnaki 900mm (35"), Bamboo Plywood
Photo — Colleen Tunnickliff



Snowflake

Creates a repeating geometric hexagonal pattern based on a snowflake. The light was designed following a trip David made to Antarctica. Red Dot winner.

Diameter	Height
800 mm (31")	400mm (16")
1000 mm (39")	500mm (20")
1600 mm (63")	700mm (28")

Kina

References the inner shell of the local salt water sea-urchin called kina in Māori which is often found washed ashore on New Zealand beaches.

Diameter	Height
440mm (17")	200mm (8")
600mm (24")	280mm (11")
800mm (31")	370mm (15")
1000mm (39")	420mm (17")
1400mm (55")	650mm (26")

Flax

Based on the long slender leaves of the indigenous flax plant or harakeke in Māori that has long been grown for its valuable fibre.

Diameter	Height
800mm (31")	220mm (9")
1500mm (59")	325mm (13")

Finish Options



Kina 1000mm (39"), Bamboo Plywood
Photo — Patrick Reynolds



Waka

A low upholstered feature bench based on David's early raft forms.

www.offecct.com



Hush

An acoustic light canopy tested in a sound lab, proven to reduce noise.

www.iqcommercial.com



Membrane

A modular space divider with acoustic dampening properties. Can be assembled in a number of ways.

www.offecct.com



Nikau Paling

A selection of nature inspired profiles that create a sophisticated exterior screening system.

www.abodo.co.nz



Kina Ottoman

The Japanese company Conde House has used fine craftsmanship to realise an ottoman version of the Kina light.

www.condehouse.co.jp



Coverings

Our studio has worked with multiple carpet, rug and wall covering companies around the world. Our ranges are based on our lights and David's nature photography.

www.dilana.co.nz
www.bleux.com.au





David Trubridge
PO Box 15 Whakatu
Hastings 4161, New Zealand

info@davidtrubridge.com
davidtrubridge.com
+64 6 650 0204

Printed on Tauro offset
FSC Certified, Chlorine free.

David Trubridge Atlas
Version 1.2